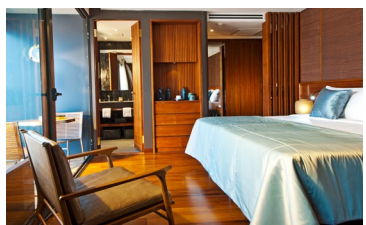




<p>BUILT 2014</p> <p>PORT OF EMBARKATION My Tho (Vietnam), Phnom Penh (Cambodia) and Siem Reap (Cambodia)</p> <p>ENGINES 2 Caterpillars Tier 3 Emission compliant</p>	<p>VESSEL'S REGISTRY Cambodia</p> <p>VESSEL LENGTH 62.4 meters / 205 feet</p> <p>TYPE OF VESSEL River Expedition</p> <p>BEAM 11.5 meters / 38 feet</p>	<p>DRAFT 1.5 meters / 5 feet</p> <p>CRUISING SPEED 12 knots</p> <p>GENERATORS 2 Caterpillars, encapsulated for noise reduction</p>	<p>ELECTRICITY 220 volts</p> <p>WATER Reverse osmosis and UV water treatment plant</p> <p>AC Central air-conditioning throughout</p>
--	--	---	---

Cruising Asia's Mekong River between Vietnam and Cambodia, Aqua Mekong is a floating five-star hotel with a guide to guest ratio of 1 to 1. This is the only ship on this stretch of the river to offer a fully equipped gym, screening room, outdoor cinema, and private launch boats.



ACCOMMODATION
40 passengers

CREW
40, including a cruise director and 4 English - speaking guides.

CABIN FEATURES
California king size bed that can be converted to twins, floor to ceiling river facing windows, large double closets, chest of drawers, password generated security box, iPod docking station, dual sink bathroom with walk-in shower and rainforest showerhead, professional hairdryer, and all-organic natural hair and bath amenities.

- Single Twin Size Bed: 1.05m (w) x 2m (l)
- California King Size Bed: 2.1m (w) x 2m (l)



CABINS
Passengers are accommodated in 20 Design Suites:

First and Second Deck: 10 Design Suites on each deck, measuring 30 sqm / 322 sq. ft.; 8 with balcony and 12 without balcony.

Design Suites without balconies all have river facing panoramic windows that open and a 4m (13ft) long interior sofa that converts to a single bed.

Design Suites with balconies all have panoramic windows, sliding glass door and an exterior daybed.

All suites are air conditioned, with en-suite bathroom.

INTERCONNECTING SUITES
4 sets of two interconnecting suites. Passengers may select a pair of interconnecting suites, either for families or with one suite configured as a private living room, the other a master bedroom.



- SOCIAL AREAS**
- Indoor and outdoor bars
 - Indoor and outdoor dining areas
 - Indoor and outdoor cinema
 - Lobby lounge and outside shaded lounge with day beds
 - Observation deck
 - Library/ Games room
 - Gym
 - Spa
 - Boutique
 - Outdoor deck plunge pool measure 3.5m (w) x 5.17m (l) x 1m (d)

SAFETY
State of the art safety features include radio communication with separate battery pack, satellite phone, Carley float life rafts, life jackets, flares and signals, fire extinguishers and smoke detectors in each cabin and automatic defibrillator on board.

INTERNET
Complimentary internet with intermittent connection.

LAUNDRY
Complimentary service (no dry cleaning on board).

BICYCLES
Ten bicycles are provided free of charge onboard, for passengers to explore independently on shore.

LAUNCH BOATS
Four auxiliary aluminum launch boats each equipped with two four-stroke low emission engines, constant radio communication with the main vessel. Each boat has a capacity of 10 passengers.

